

THE ATLAS HOTEL

Hamilton's Finest Hotel--Sanitary Barber Shop and Bar Room



GUS BOSCH.

At the corner of Fourth street and Maple avenue is located one of the leading hotels in the city of Hamilton, the Atlas, operated by Mr. Gus Bosch. This hostelry is being repaired, refitted, and remodeled at the present time and when the work is completed no hotel in a city the size of Hamilton will excel it.

The hotel has sixty rooms, all up to date in their furnishings and most of them with running water. Many of them have private baths attached. Most of the rooms have telephone connections with the office. All are electrically lighted and heated with steam. A first class kitchen, sanitary in every way is one of the features of the hotel.

The hotel is located near the Cincinnati, Hamilton & Dayton railway station and almost as close to the Pennsylvania station and thus gets a large percentage of the traveling public who drop into the city over night or for a day or two.

A new sanitary barber shop has been attached to the hotel recently. The floors are of tiling, the chairs are enamelled and everything is kept in such shape that the title "The Most Sanitary Barbershop in the City" is by no means a misnomer.

Besides the new barbershop, Mr. Bosch has recently installed a new bar. In the hotel is a restaurant and lunch room, constituting quite a convenience to the patrons. The hotel is operated on the American plan.

Mr. Bosch has owned the hotel for eleven years and each year has tried to make such improvements as would keep the house up to the ever advancing standards. He is determined that his hotel shall keep abreast of the times and has succeeded remarkably well.

Mr. Bosch is a live wire in the hotel business and is trying at all times to give his patrons the best obtainable, at reasonable prices.

MIAMI FOUNDRY COMPANY

The Miami Foundry Company was originally known as the Vulcan Foundry company. The Vulcan Foundry company began business in Hamilton on July 10, 1900, in the shops erected at Fifth and Dayton streets. The demand for the company's products was extensive from the start and in the course of a few years it was found that the enlarged business could not properly be handled within the limits of the present shops.

In January 1906, the three and one-half acres now occupied by the Miami Foundry Company were occupied by a larger plant and the industry from its beginning has tripled in importance and in the amount of its output.

The present officers of the Miami Foundry Company are, James K. Cullen, president; William B. Cullen, vice-president, and G. S. Helvey secretary and treasurer.

The present name of the company was adopted January 20, 1909, when James K. Cullen, president of the Niles Tool Works Company, and his son, William B. Cullen, became connected with the concern. The Miami Foundry is now acknowledged as a leader in the manufacture of small castings.

The Miami Foundry Company is under the direction of two young men today, William B. Cullen and G. S. Helvey. They have active charge of the work and direct the affairs of the company. The plant has an unlimited capacity and is recognized as a concern of much importance.

THE EDWARD SOHNGEN MALT COMPANY



EDWARD C. SOHNGEN.



GEORGE P. SOHNGEN.

Hamilton's industries are not confined to any one style or particular kind of manufacture. In fact her industries are more varied than those of any other city of the same size in the world, and in the Edward Sohngen Malt Company, Hamilton may boast of an industry which does more business than any other like company in the state.

This company not only owns the big plant at High street and the C., H. & D. railroad, but also has a larger plant at Chicago.

The capacity of the plant is over 600,000 bushels of malt a year.

The Edward Sohngen Malt Company started in business in the fall of 1900. George P. Sohngen is president, but Edward Sohngen is the secretary and treasurer and the active manager and head of the big concern, capitalized at \$100,000.

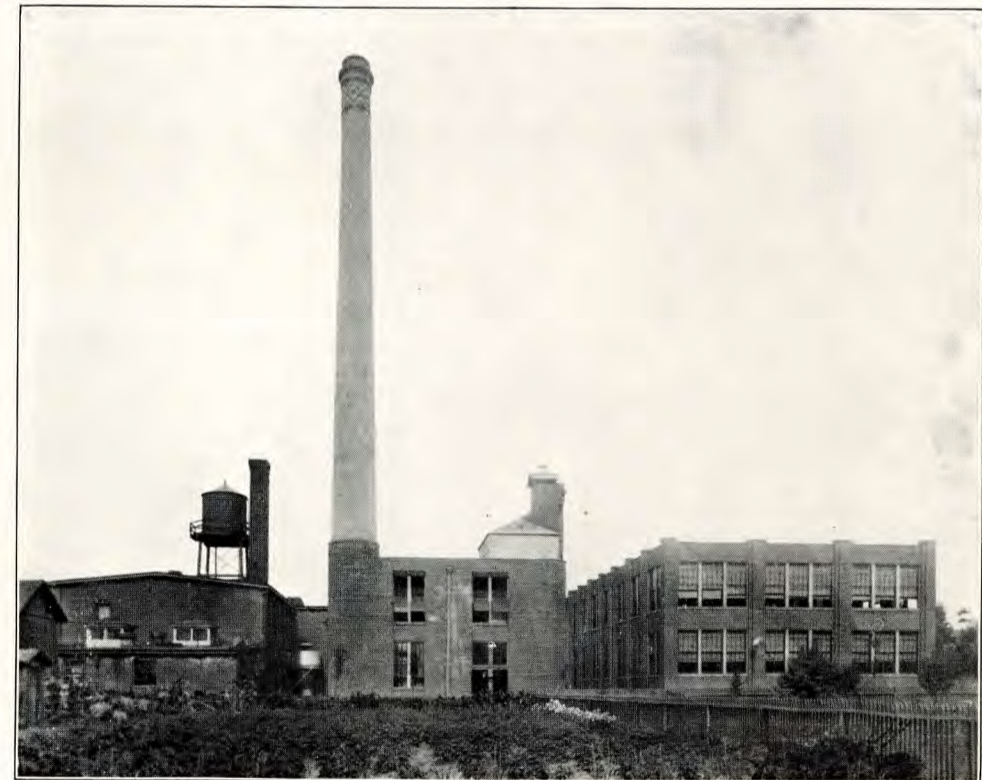
The stock is held by George P. and Edward Sohngen. Both were identified with the Sohngen Malt Company which they sold to the American Malting Company in 1897.

Barley used in the plant comes mostly from Wisconsin, Minnesota, and Iowa, but much of it comes from the district contiguous to Hamilton.

The product is shipped to points in Ohio, West Virginia, Kentucky, Indiana, Pennsylvania, District of Columbia and in fact the leading brewers throughout the country.

The business is controlled entirely by the Sohngens, whose name as is known all over the country, stands for progressive-ness in business. They have been a bulwark in Hamilton business circles and have been instrumental in forming brewery combinations in various parts of the country.

THE MIAMI VALLEY KNITTING MILLS



PLANT OF MIAMI VALLEY KNITTING MILLS.

A plant where every one is satisfied, and where the management makes an especial effort to employ men, and women, and girls of a high moral character is that of The Miami Valley Knitting Mills located at Ninth and Hanover Streets.

The mills are a model in all their equipments, and modern in all their operations.

The character of their product, which is eagerly sought by the most critical jobbing trade, reflects their continuous efforts to make it the best of its class and the recognized standard for excellence.

Everything that the company can do to promote the health, sanitation and well being of its employes is done, making it a plant where the conditions of employment are ideal.