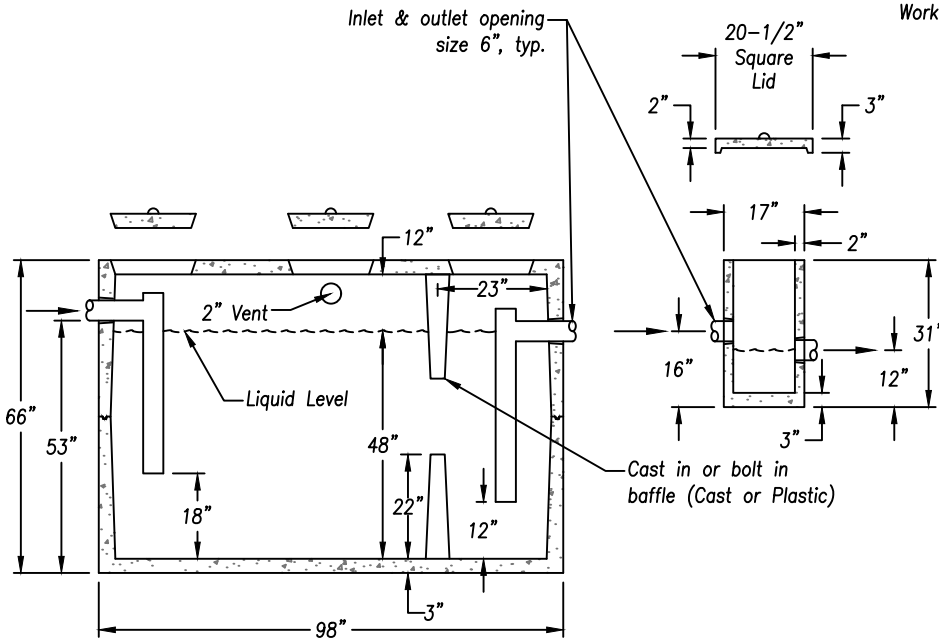
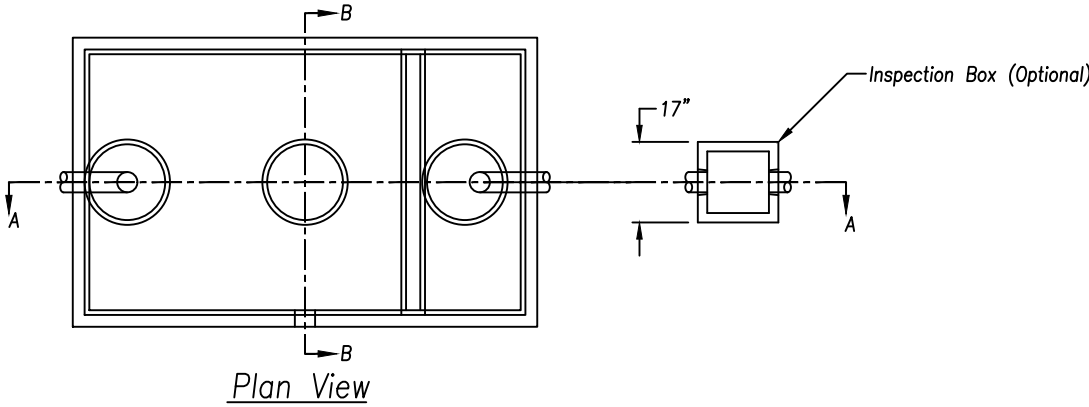


### Grease Interceptor - Oil/Water Separator (Baffled)

DATE: 05/04/2020

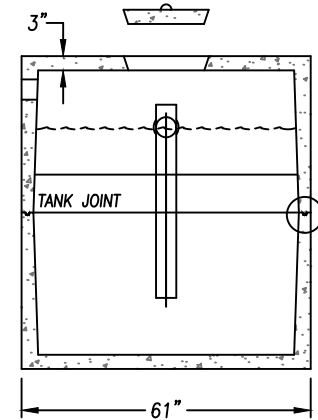
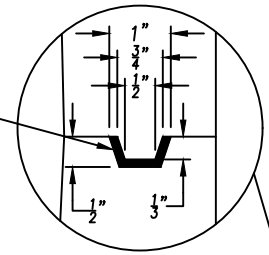
SCALE: NONE

FILE: 2020-040.DWG



SECTION A-A

ASTM D-65 or CONSEAL  
Workability Temp: 30°F - 300°F



SECTION B-B

Notes:

1. Access manholes with a minimum diameter of 24" shall be provided over each grease interceptor chamber. The access manhole shall extend at least to finished grade and be designed and maintained to prevent water inflow or infiltration. The manholes shall be readily removable covers to facilitate inspection, grease removal, and wastewater sampling activities.
2. Provide a minimum of two manholes.
3. Grease interceptor shall have a capacity of at least 1000 gallons.
4. Piping by others. 4" PVC Schedule 40 or as directed by the Public Utilities Director.